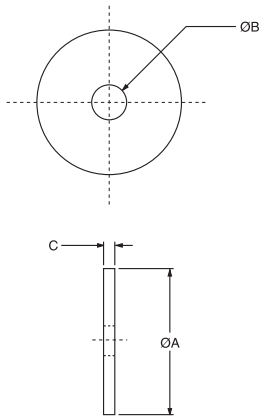


500SL MOUNT SERIES: SNUBBING WASHER

Dimensions

500SL MOUNT SERIES SNUBBING WASHER



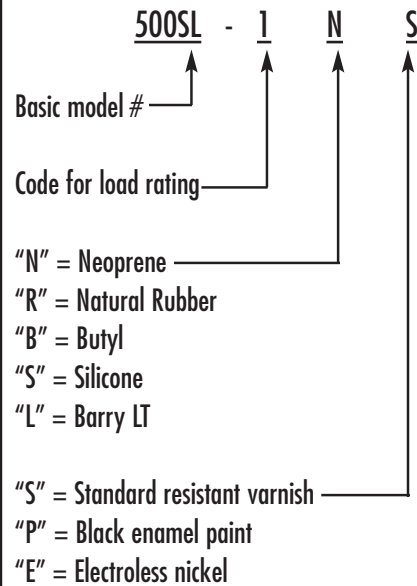
Size	"A" Dia.	"B" Dia.	"C"	Part #
558SL	2.00	.510	.125	R18733-2
562SL	2.50	.760	.188	R18733-4
566SL	3.25	1.010	.250	R18733-5

The use of snubbing washers is recommended to ensure proper static and dynamic loading of the isolator and retention of suspended equipment under severe shock environments.

Snubbing washers are ordered by separate part numbers as shown in the above table. The standard material is low-carbon steel and the standard finish is zinc plate. Other materials and finishes are available upon request.



HOW TO ORDER 500SL SERIES ISOLATORS



Standard suffix is "NS". Consult factory for availability and compatibility of other materials & finishes.